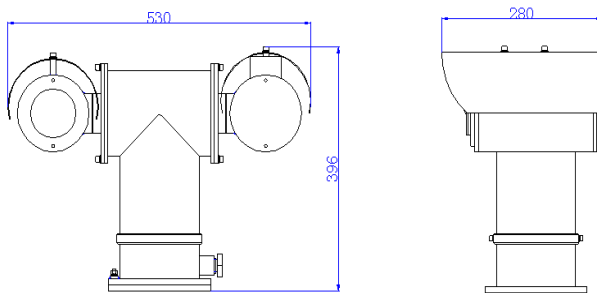


ZAT610**EXPLOSION-PROOF CORROSION PROOF INTEGRATED PTZ CAMERA WITH LIGHTS****MAIN FEATURES**

- stainless steel 304 or 316L
- optional electropolished or corrosion resistant paint finish
- Enclosure Protection: IP68
- Exd II CT6 & DIP A20, TA, T6
- Fit for gas zone 1, zone 2, dust zone 21, 22
- Optional power input: AC24V, AC100~240V
- Working Current: ≤500mA
- Variable speed: 0.1°- 45°/S Pan and Tilt
- Pan : 0-360°, Tilt: -90 to +90°
- With lights for night vision: 0-80m distance
- Integrated wiper system, sunshiled
- With lights for night vision: 0-80m distance
- Camera: optional Sony , Samsung, Hikvision, Dahua
- Optional lower temperature range: -50 to 65 °C
- Application: gas station, chemical factory, petroleum processing factory, oil drilling platform, marine, pharmaceutical factory, gain store, winery store

**ZAT610**

Model	ZAT610-S-IP	ZAT610-S
Atmospheric pressure	80KPa~110Kpa	
Ambient Temperature	-20°C~+60°C	
Relative Humidity	≤95% (+25°C)	
Ex-proof mark	Ex d II CT6 & DIP A20, TA, T6	
Explosion proof Certified	CNEEx 14.0068	
Ingress Protection	IP68	
Housing Material	Stainless Steel 304, or 316L	
Optional Voltage Input	AC24V, AC100~240V	
Working Current	≤500mA	
Power consumption	<50w	
Optional Auto-heating, cooling kit	-20 to +60°C	
	-50 to +65°C (lower temperature version)	
Night vision	0-80m distance	
Pan and Tilt	horizontal rotation: 360° continuous vertical rotation: -90° to +90°	
Rotation speed	0.1-45°/s	
Preset patrol	128	
Control way	RS485, PELCO-D/P Protocol	
Signal output	RJ45	AV output
Cable output	RJ45+power cable	Integrated cable
Camera resolution	1.3MP or 2MP	700TVL
Camera optical zoom	20X or 30X	23X or 36X
Lens	4.7-94mm or 4.3-129mm	4-92mm, or 3.3-119mm
Min illuminator	Color 0.05lux, B&W 0.01lux	Color 0.04lux, B&W 0.004lux
Functions	Auto ICR, Day&night switch	
Overall dimension	530*280*396mm	
Net weight	27 kg	

Accessories**ZAZ610B WALL BRACKET****FLEXIBLE TUBE****ZAJXD4 JUNCTION BOX****DRAWINGS**

specifications subject to change without notice. © ZUO AN all rights reserved.

skype: cookee.lee
tel +86-15295033359